

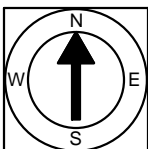
85 Myrtle Street  
Boston, MA 02114

**First Floor Plan**  
Ceiling Height = 8'-6"



Scale 1/8" = 1'-0"

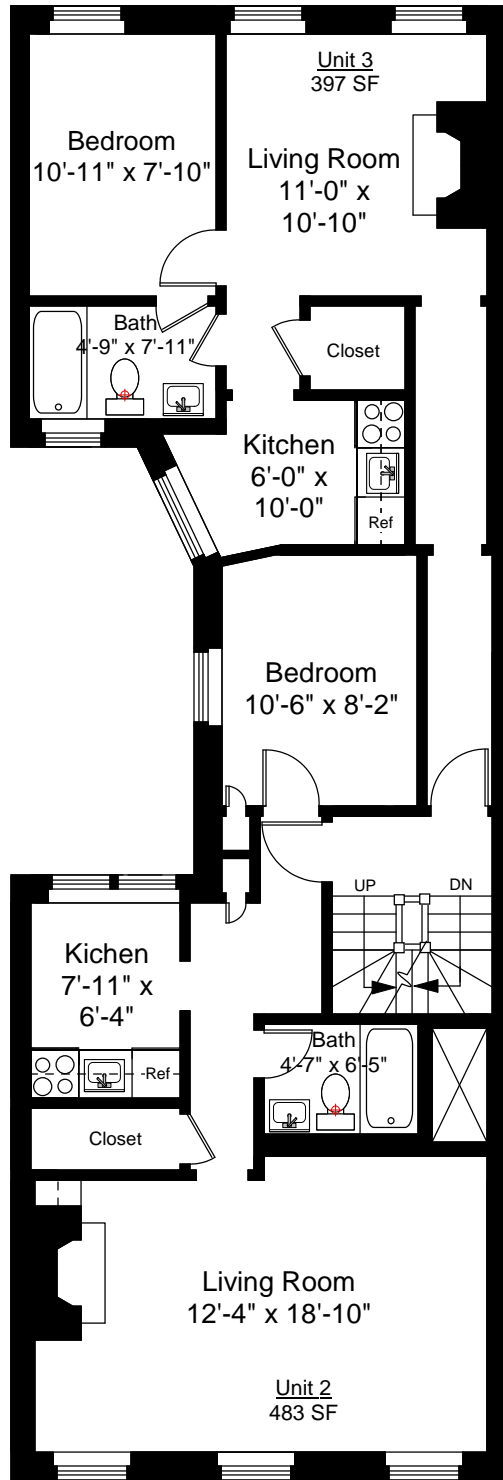
1



Completed: June, 2012

Note: Dimensions are not guaranteed and are provided for informational purposes only.

**NEW ENGLAND**  
FLOOR PLANS  
& PHOTOGRAPHY  
(800) 328-0217



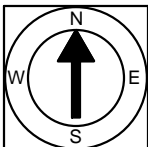
85 Myrtle Street  
 Boston, MA 02114

Second Floor Plan  
 Ceiling Height = 8'-8"



Scale 1/8" = 1'-0"

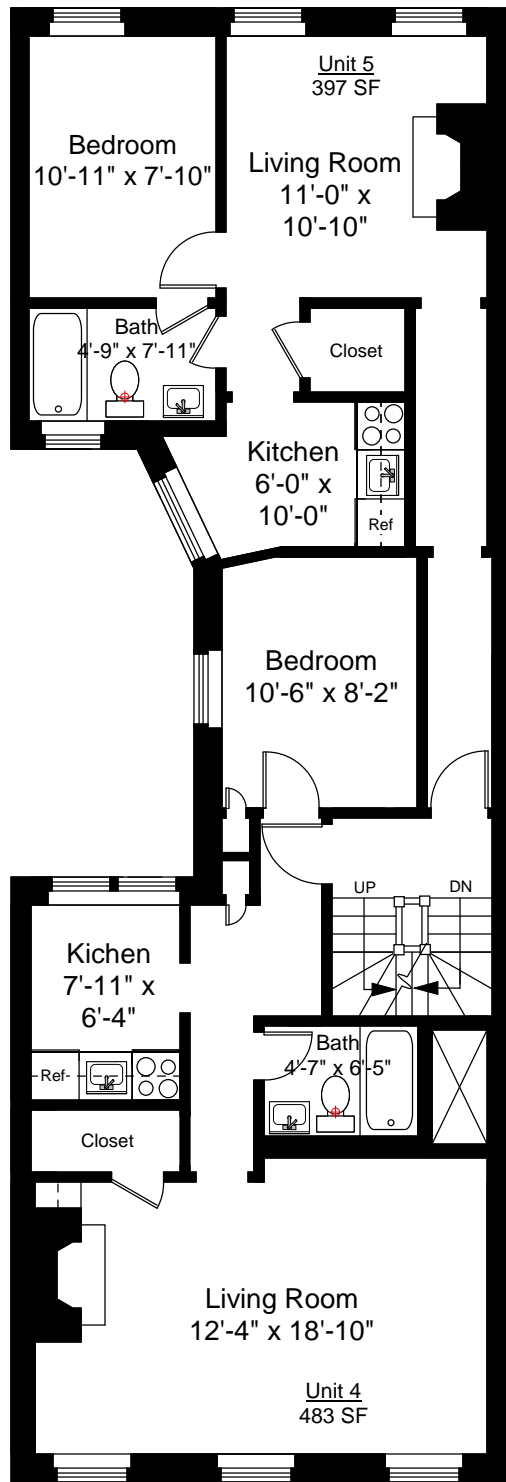
2



Completed: June, 2012

Note: Dimensions are not guaranteed and are provided for informational purposes only.

  
 NEW ENGLAND  
 FLOOR PLANS  
 & PHOTOGRAPHY  
 (800) 328-0217



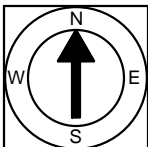
85 Myrtle Street  
Boston, MA 02114

**Third Floor Plan**  
Ceiling Height = 8'-8"



Scale 1/8" = 1'-0"

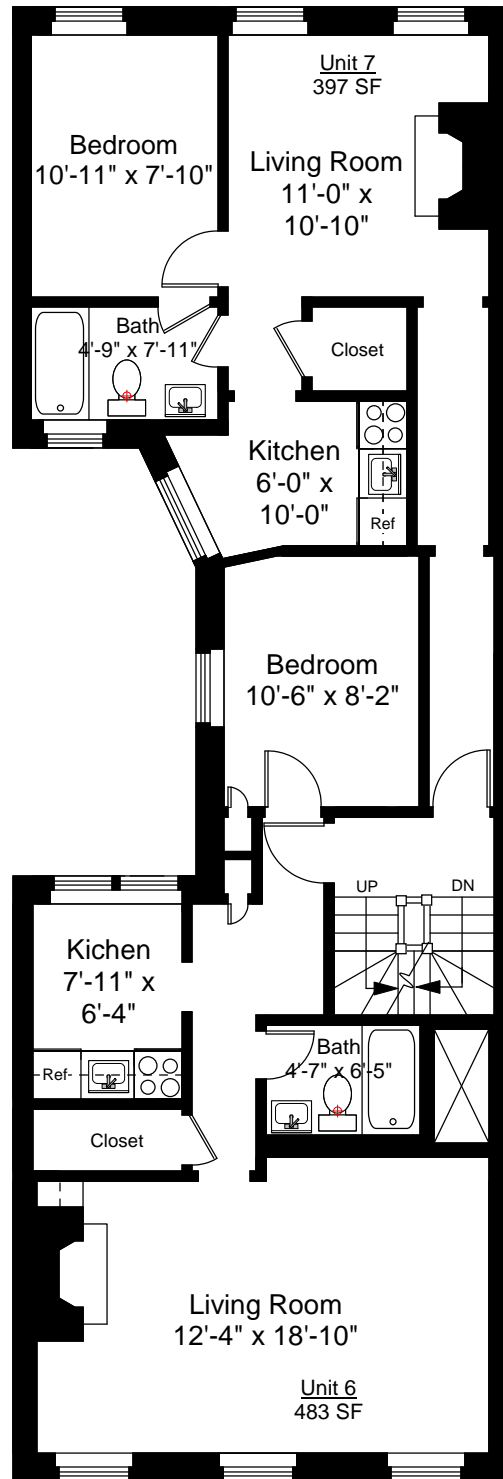
3



Completed: June, 2012

Note: Dimensions are not guaranteed and are provided for informational purposes only.

**NEW ENGLAND**  
FLOOR PLANS  
& PHOTOGRAPHY  
(800) 328-0217



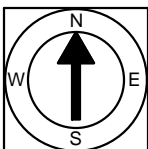
85 Myrtle Street  
Boston, MA 02114

Fourth Floor Plan  
Ceiling Height = 8'-9"



Scale 1/8" = 1'-0"

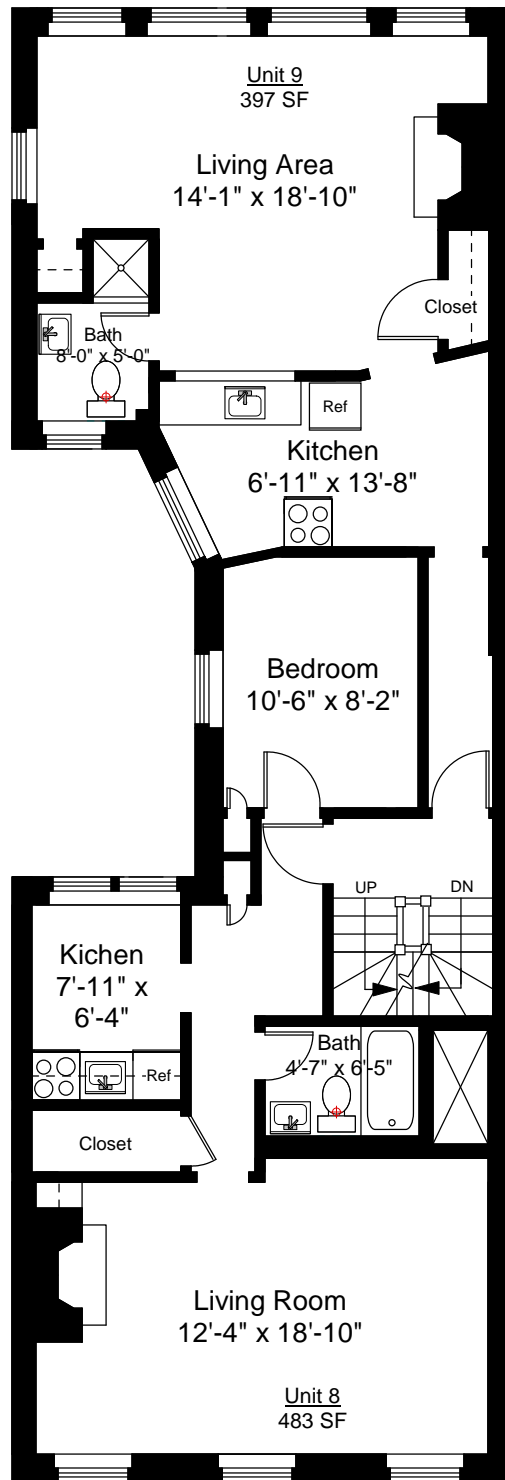
4



Completed: June, 2012

Note: Dimensions are not guaranteed and are provided for informational purposes only.

  
NEW ENGLAND  
FLOOR PLANS  
& PHOTOGRAPHY  
(800) 328-0217



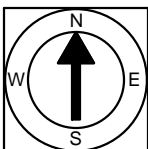
85 Myrtle Street  
Boston, MA 02114

Fifth Floor Plan  
Ceiling Height = 8'-9"



Scale 1/8" = 1'-0"

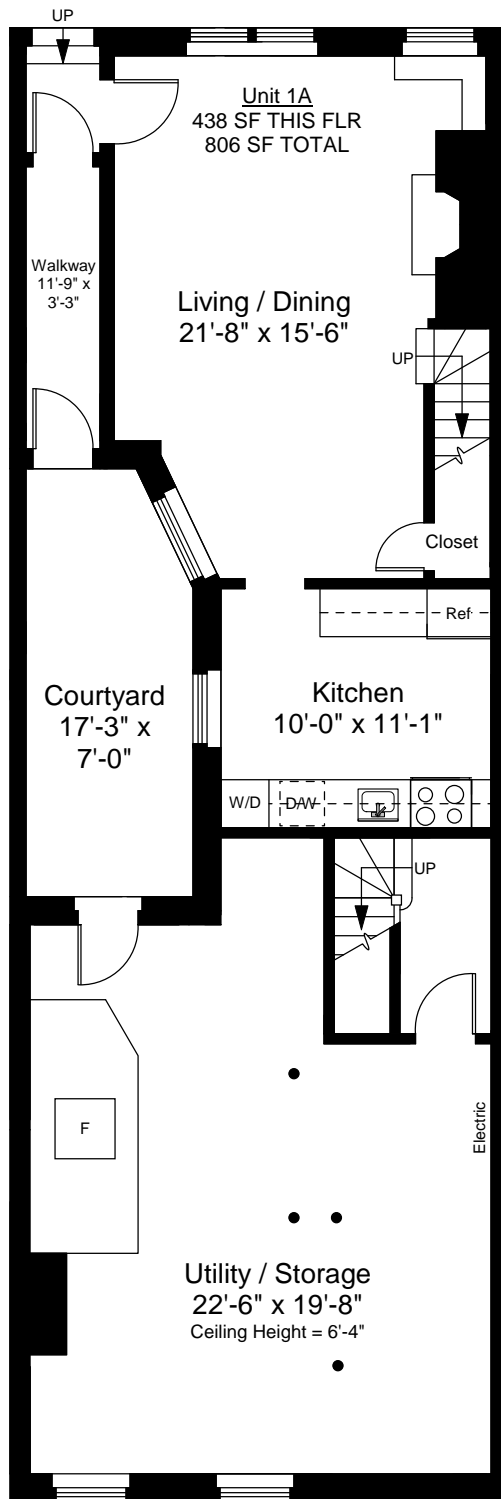
5



Completed: June, 2012

Note: Dimensions are not guaranteed and are provided for informational purposes only.

  
NEW ENGLAND  
FLOOR PLANS  
& PHOTOGRAPHY  
(800) 328-0217



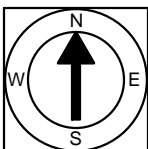
85 Myrtle Street  
Boston, MA 02114

**Lower Level Floor Plan**  
Ceiling Height = 8'-6"



Scale 1/8" = 1'-0"

6



Completed: June, 2012

Note: Dimensions are not guaranteed and are provided for informational purposes only.

**NEW ENGLAND**  
— FLOOR PLANS —  
& PHOTOGRAPHY  
(800) 328-0217